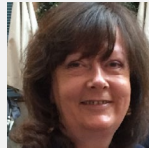


Wellbeing: Disability & Neurodiversity

Supporting you with your disability

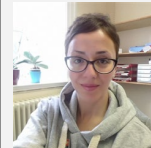


ROYAL
HOLLOWAY
UNIVERSITY
OF LONDON



Julie Wright

Head of Disability &
Neurodiversity



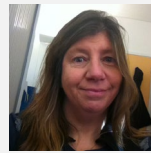
Mona Khatibshahidi

Academic Adviser



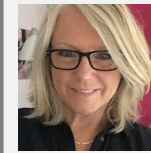
Helen Fisher

Academic Adviser



Jackie Knowles

Academic Adviser



Fiona Lambie

Academic Adviser



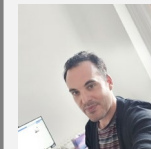
Deon Chorley

Mental Health Adviser



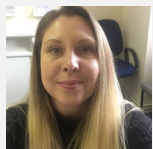
Chris Troughton

Mental Health Adviser



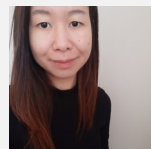
Phil Puttock

Specialist Mentor



Emilie Titterrell

Disability Adviser



Sindy Cheung

Disability Adviser



Susan Jewitt

Disability Adviser



Vacancy

Disability Adviser



Fenella Attewell

Disability & Neurodiversity
Co-ordinator